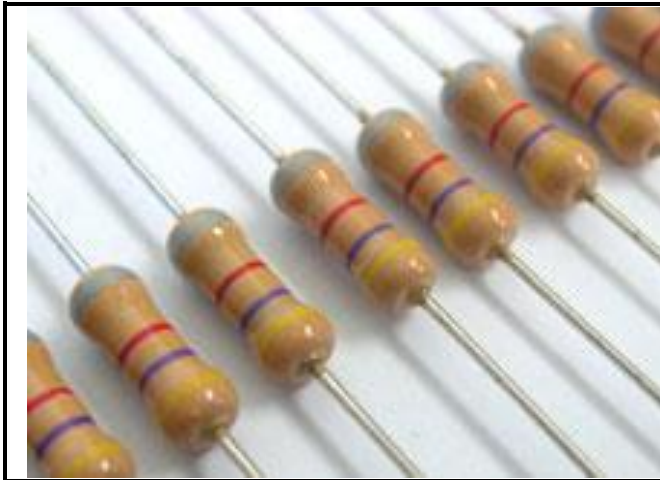
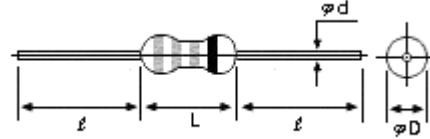


MGR

FIXED METAL GLAZED RESISTORS (COAT-INSULATED)



■ 촌 법 DIMENSIONS



형 명 Type	촌 법 Dimensions [mm]			
	L±1.0	D±0.5	d±0.05	l±3
MGR 1/4W, MGRS 1/2W	6.0	2.4	0.55	27
MGR 1/2W, MGRS 1W	9.0	3.5	0.67	26
MGR 1W, MGRS 2W	11	4.0	0.67	28
MGR 2W, MGRS 3W	15	5.5	0.77	28

■ 일반규격 GENERAL SPECIFICATIONS

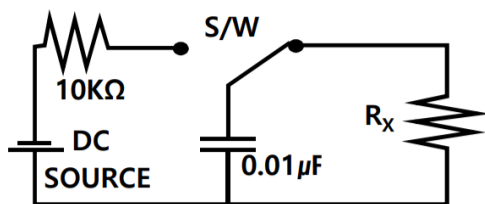
Type	Rated Wattage	Max. Working Voltage	Max. Overload Voltage	Surge Test	Resistance Range		Resistance Tolerance
					±1.0(F)	±2.0(G), ±5.0(J)	
MGR 1/4 MGRS 1/2	0.25W 0.5W	700V	1,000V	2kV/10nF	10kΩ ~22MΩ	10kΩ ~33MΩ	±1.0(F) ±2.0(G) ±5.0(J) ±10(K)
MGR 1/2 MGRS 1	0.5W 1W	1,000V	1,500V	R<560kΩ: 5kV/10nF R>560kΩ: 10kV/10nF	10kΩ ~33MΩ	10kΩ ~100MΩ	
MGR 1 MGRS 2	1W 2W	1,500V 2,000V	2,000V 3,000V	R<560kΩ: 5kV/10nF R>560kΩ: 10kV/10nF	10kΩ ~51MΩ	10kΩ ~100MΩ	
MGR 2 MGRS 3	1W 3W	3,000V	3,000V	R<560kΩ: 5kV/10nF R>560kΩ: 10kV/10nF	10kΩ ~70MΩ	10kΩ ~330MΩ	

■ 특 성 CHARACTERISTICS

Test	Conditions
1. 사용온도범위 Operating Temp. Range	-55°C ~ +155°C
2. 온도계수 Temperature coefficient	± 350ppm/°C Max.
3. 단자강도 Terminal Strength	2.5kgf, remains 5~10sec
4. 내전압 Dielectric Withstanding Voltage	±[1.0% + 0.05Ω]
5. 단시간과부하 Short Time Overload	±[2.5% + 0.05Ω]
6. 내구성 Load Life	±[5.0% + 0.05Ω]
7. 내습성 Moisture Resistance	±[3.0% + 0.05Ω]

■ 온도상승곡선 TEMPERATURE RISE CURVE

■ 주문방법 HOW TO ORDER



*Ten discharges from a 10nF capacitor charged to Vmax : 2.5sec on/off 5cycle
*No evidence of over, mechanical damage, arcing or insulation breakdown.

MGR 1/2W 5MΩ F TP
1 2 3 4 5

1. 형명 Type
2. 정격전력 Rated Wattage
3. 저항치 Resistance
4. 허용오차 Tolerance
5. 2 차가공 (TP= Taping & BK= Bulk)