
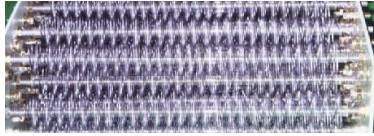



DBR(Dynamic Braking Resistor)

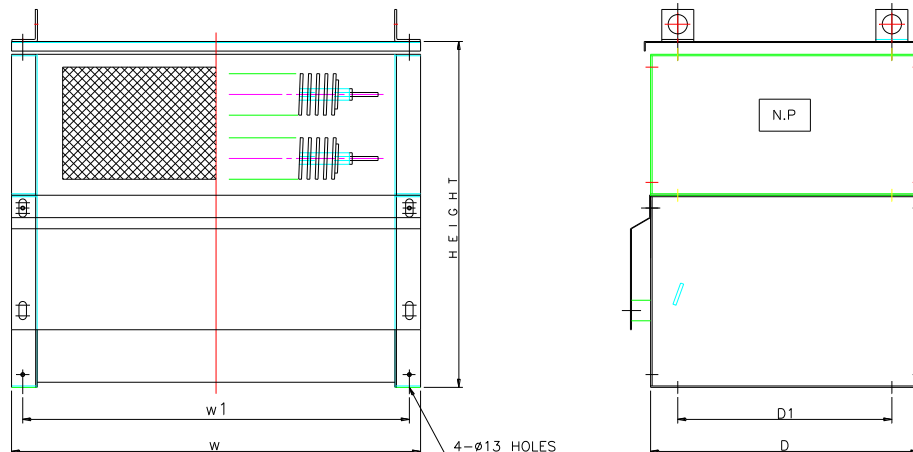
SPECIFICATIONS

Model	Power Rating With Fan	Power Rating In Free Air	Resistance Range [Ω]	Tolerance	Element Image
DBRI-EW 16K	9.6 kW	8 kW	2~40	±5%(J) ±10%(K)	
DBRI-EW 30K	18 kW	15 kW	2~12		
DBRI-EW 50K	30 kW	25 kW	3~20		
DBRI-EW 70K	40 kW	35 kW	3~40		
DBRI-EW 100K	60 kW	50 kW	5~40		
DBRI-HW 16K	9.6 kW	8 kW	3~65		
DBRI-HW 30K	18 kW	15 kW	3~30		
DBRI-HW 50K	30 kW	25 kW	5~50		
DBRI-HW 70K	40 kW	35 kW	10~70		
DBRI-HW 100K	60 kW	50 kW	10~150		
DBRI-VW 16K	9.6 kW	8 kW	1~9.5		
DBRI-VW 30K	18 kW	15 kW	1.2~10		
DBRI-VW 50K	30 kW	25 kW	1.5~20		
DBRI-VW 70K	40 kW	35 kW	1.5~35		
DBRI-VW 100K	60 kW	50 kW	1.5~40		

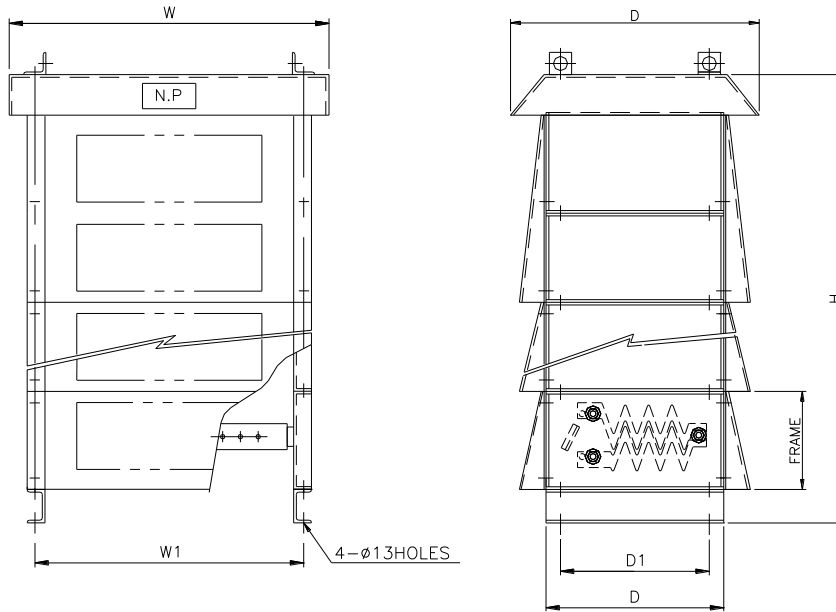
- * DBRI-EW: Edge wound type (inductive)
- * DBRI-HW: Heli-wire wound type (inductive)
- * DBRI-VW: V-W grid type (non-inductive)
- * The DBRI is for indoor use; DBRO is for outdoor use. The DBRO internal structure is the same as the DBRI
- * The DBRO has a watertight external structure
- * The Power rating is based on a 375C rise above an ambient of 40C

DIMENSIONS

Model	Approx. Weight(kg)	Dimensions in [mm]				
		W	W1	D	D1	H
DBRI-EW,HW,VW 16K	26	640	605	420	335	320
DBRI-EW,HW,VW 30K	55	640	605	420	335	540
DBRI-EW,HW,VW 50K	80	640	605	420	335	760
DBRI-EW,HW,VW 70K	120	640	605	420	335	1200
DBRI-EW,HW,VW 100K	235	640	605	840	755	980/1200



Model	Approx. Weight(kg)	Dimensions in [mm]				
		W	W1	D	D1	H
DBRO-EW,HW,VW 16K	32	720	605	560	335	390
DBRO-EW,HW,VW 30K	60	720	605	560	335	590
DBRO-EW,HW,VW 50K	87	720	605	560	335	790
DBRO-EW,HW,VW 70K	130	720	605	560	335	1190
DBRO-EW,HW,VW 100K	250	720	605	980	755	1190



CHARACTERISTICS

Test	Condition
Insulating Resistance	Min.100MΩ
Dielectric Strength	AC 2000V/Min.
Allowable Temp. Rise	375C

ORDERING EXAMPLE

DBR	I	EW	10 ohm	J
Model	Indoor I: indoor O: outdoor	Element EW: edge wound type HW: heli-wire wound type VW: V-W grid type	Resistance	Tolerance J=±5% K=±10%